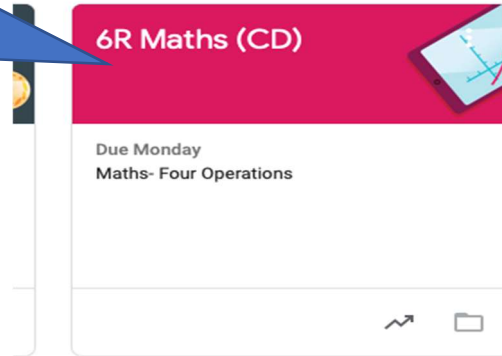


Accessing Google Classroom Live Lesson

Part I - Accessing The lesson

1. Log in to Google Classroom and select the classroom where your live lesson is.



D)

Stream

Classwork

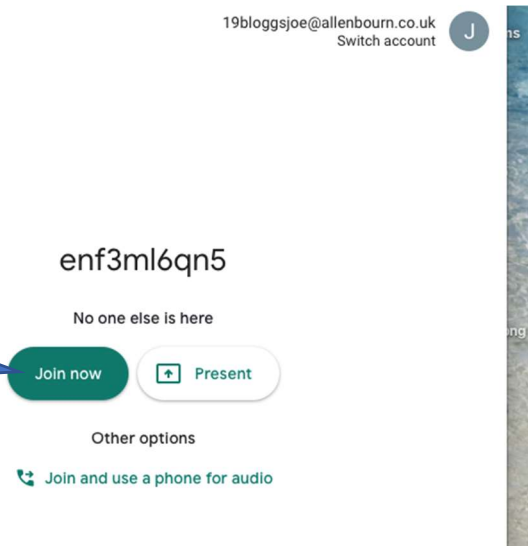
People

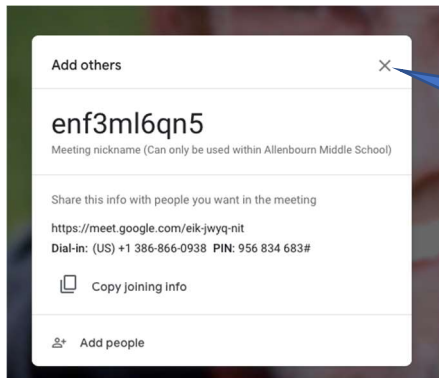
6R Maths (CD)

Meet link <https://meet.google.com/enf3ml6qn5>

2. In the class stream you will see a link here for the live lesson click on this for it to start.

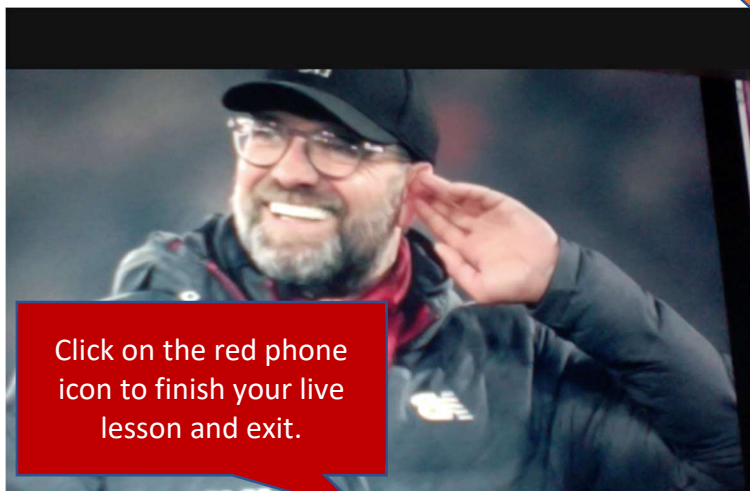
3. Agree to access of your camera and microphone if asked (but neither are essential to joining the lesson) and click 'Join now'.





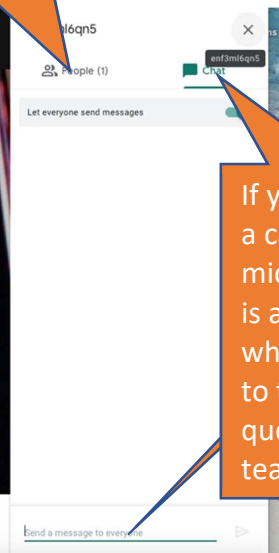
4. Close this box if this appears on your screen.

Part II – Google Meets Screen Layout



Click on the red phone icon to finish your live lesson and exit.

This tells you who else is in your lesson



If you are without a camera or microphone there is a chat function which allows you to type in questions for your teacher

Press these to turn your camera and microphone on/off